

TESTED: 9 TOUGHEST PANTS / NEW ULTRALIGHT HARNESS

# Climbing

**65** TOP  
TECHNIQUES  
AND TOOLS

# BIG WALL BIBLE

STEP-BY-STEP BEGINNER GUIDE  
SIX MUST-DO ROUTES

\*  
ROAD TRIP  
PLANNER  
**SUN,  
SUDS,  
AND  
SWEET  
CLIMBS**

**THE GUNKS**  
AMERICA'S  
FINEST 5.10s

**SMITH ROCK**  
THE SECRET  
STASHES

**FESTIVALS**  
WHAT'S HOT  
THIS YEAR

LUEBBEN'S  
LIFE LIST  
10 LEGENDARY  
WIDE CRACKS

\$5.99 US / CAN  
MARCH 2012  
Display Until March 20, 2012



## Functional Prep MOUNTAIN KHAKIS LAKE LODGE TWILL PANT

Built to beat the heat, these light cotton-twill pants have two-percent Lycra and a diamond-gusseted crotch, so high-stepping and yogatastic moves won't be a problem. Triple-stitched seams and reinforced cuffs keep these pants from wearing out too quickly, and Chino-styling—complete with front and rear pockets—keep them from looking too techy. On *Gamesmanship* (5.8) on New York's Pok-O-Moonshine, jamming into the Adirondacks' ancient granite left these pants unscathed. In fact, these are the pants to rock for a pre-sesh breakfast out or post-send beers at the bar. Some testers even wore them to work. They're medium rise with a full-cut leg—a favorite of climbers with a little more meat on their bones who like to look presentable in public.



\$90 / [mountainkhakis.com](http://mountainkhakis.com) / Bright and unique colors (like Nantucket red, mint julep, light and dark khaki) / Burlly and durable

## Best Jeans

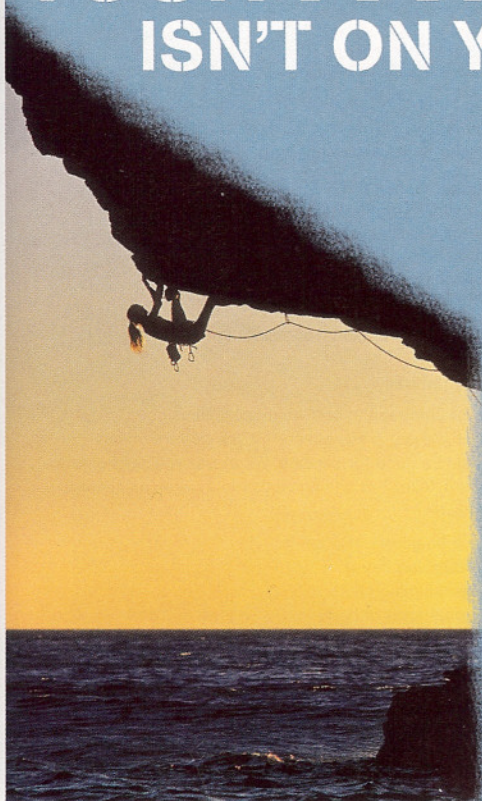
### PRANA AXIOM JEAN

According to our informal survey, the perfect jeans for climbing: 1) look like normal jeans; 2) stretch; 3) let you see your feet; and 4) don't look like your dad's Levis from 1980. We tested four different styles, and the unanimous favorites were Prana's Axiom. Testers wore these jeans for three months of indoor and outdoor climbing throughout New England in fair autumn weather. The Axioms provided adequate protection from the rock and plenty of stretch at the crux ("kneebar followed by a very high right foot with a low left foot") on one tester's redpoint of Carcass Crag's *Who's Your Daddy* (5.12c/d) in Vermont. The gusseted crotch was unrestrictive, and multiple testers praised the standard jeans pockets.



\$75 / [prana.com](http://prana.com) / Medium rise / Narrow thighs

# YOUR FAVORITE ROCK ISN'T ON YOUR RING FINGER.



VAPOR WMN CLIMBING SHOE

POWERFUL AND PRECISE, THE VAPOR WMN CRAVES FOOTWORK CHALLENGES IN ADDITION TO PROVIDING A FIT THAT'S READY TO MAKE A LONG-TERM COMMITMENT.

[WWW.SCARPA.COM](http://WWW.SCARPA.COM)

  
**SCARPA**  
NO PLACE TOO FARR™